

WHAT'S UP?

Vol. 07 April 2019

The programme in Kyushu University started on 13 February. The participants were introduced to photogrammetry by Associate Professor Inoue and his student assistants, followed by an architecture tour in



Fukuoka city. They visited Gurin Gurin which is situated in the island city, designed by Toyo Ito. The tour continues in the city centre to see prominent architecture of Fukuoka City such as the ACROS, Fukuoka City Literature Museum and Fukuoka Prefectural Public Hall Kikunikan.



On 14 February, we had the opening symposium "Current State and Challenges of Urban Heritage in Asia". We had Miss Mingma from Jawaharlal Nehru University as the keynote speaker, followed by the participants from the 5 universities, who shared about the restoration efforts and issues faced in their country. The sharing

Innovative Asia

This year, with the support of Innovative Asia initiative by Japan International Cooperation Agency (JICA) who aims to enhance the circulation of competent human resources between Japan and Asian countries and to promote innovation throughout Asia, the Environmental Design Global Hub (eghub), Environmental Design Department, Faculty of Design, Kyushu University has organized the International Research-Educational Program of Historical Environmental Design to develop experts who are involved in areas such as conservation for architectural heritage, historical landscape and natural environment in the context of Asian cities. The programme included a symposium, lecture and architecture tours related to preservation of architectural heritage, historical towns and landscape.

We have participants coming from 5 universities from Laos, Malaysia, Myanmar and the Philippines. Also, guest speakers from India and Australia.



was enlightening for all.



For 15 February, the day started with the participants participating in Kyushu University, Faculty of Design, Environmental Design Students' Graduating

Project Presentation. Students shared their projects with the participants in a gallery walk and voted projects were presented in a formal presentation in the afternoon.



From 16 to 20 February, the group went to Kyoto and Shiga. In Shiga, they visited many ancient buildings that are the national treasures such as Ishiyama Dera Temple, Chuojuji Temple, Aburahi Temple, Hiyoshitaisha Shrine and, Hikone Castle.



They also visited the well-preserved traditional buildings of the important cultural landscape such as Wachusan Honpo,



Omiachiman. In Omiachiman, they get to see La Collina, a Baumkuchen factory built in 2015 with a “lawned roof”. It was designed by Terunobu Fujimori, an architect and historian of Japanese Architecture who is famous in using natural materi-



als and ancestral techniques of construction. In Kyoto, they visited Toraya, one of the long-standing Japanese sweet shops and the refurbished Rohm Theatre. Associate Professor Komiyama Yosuke from Kyoto University gave an introduction to restoration design and issues on these two buildings.



They also visited the restoration site of Manpuku Ji to have an insight into the restoration processes, methods and issues faced.



Upon returning to Fukuoka from Kyoto, the group has a day of discussion on 21 February of how they can improve the current situation in their country and present their ideas on the final day of the

programme. The final day programme started with the two speakers, Associate Professor Inoue of Kyushu University and Professor Miles Lewis from the University of Melbourne. It was followed by 5 groups presentation from the participants.



The programme concluded with a farewell dinner and many goodbyes and friendship forged.



Collaborative Workshop

between
**KYUSHU UNIVERSITY
FACULTY OF DESIGN**
X
**UNIVERSITY OF NEW
SOUTH WALES
CITY FUTURES
RESEARCH CENTRE**

HOUSING and U R B A N RENEWAL

The 3 day workshop from 6 to 8 March 2018 was organized with the purpose of bringing together potential research collaborators from the Environmental Design Department, Faculty of Design at Kyushu University, City Futures Research Centre at University of New South Wales Built Environment and associated partners from other universities, with the aim of identifying potential research areas and projects of mutual interest.



The workshop focused broadly on issues related to the renewal of large housing complexes, both publicly and privately owned. Both countries have been active in the renewal of large public housing estates and to a lesser extent the renewal of multiple ownership private condominiums and larger housing complexes which represent particular challenges for owners, policy makers and the development industry. This broad theme embraces a wide range of social, legal, planning, design, construction and project management issues, and is thus multidisciplinary by nature.



The workshop also included a field trip to view the different danchi development in Fukuoka, ranging from the consideration of aged residents, disaster victims, families with young children, energy efficiency at Ozasa Danchi to the high-end housing development of the Island City, a reclaimed island, and the master-plan of this reclaimed island.



Participants:

Associate Professor Junko ABE, Sugiyama Jogakuen University
Dr Laura CROMMELIN, Research Fellow, University of New South Wales
Associate Professor Hazel EASTHOPE, University of New South Wales
Emeritus Professor Bruce JUDD, University of New South Wales
Dr Edgar LIU, Senior Research Fellow, University of New South Wales
Assistant Professor Leon LOH, Kyushu University
Professor Bill RANDOLPH, University of New South Wales
Miss Rei SHIRAISHI, Doctoral Student, Kyushu University
Professor Kenichi TANOUÉ, Kyushu University
Professor Shunsuke YOKOYAMA, Osaka City University

About...

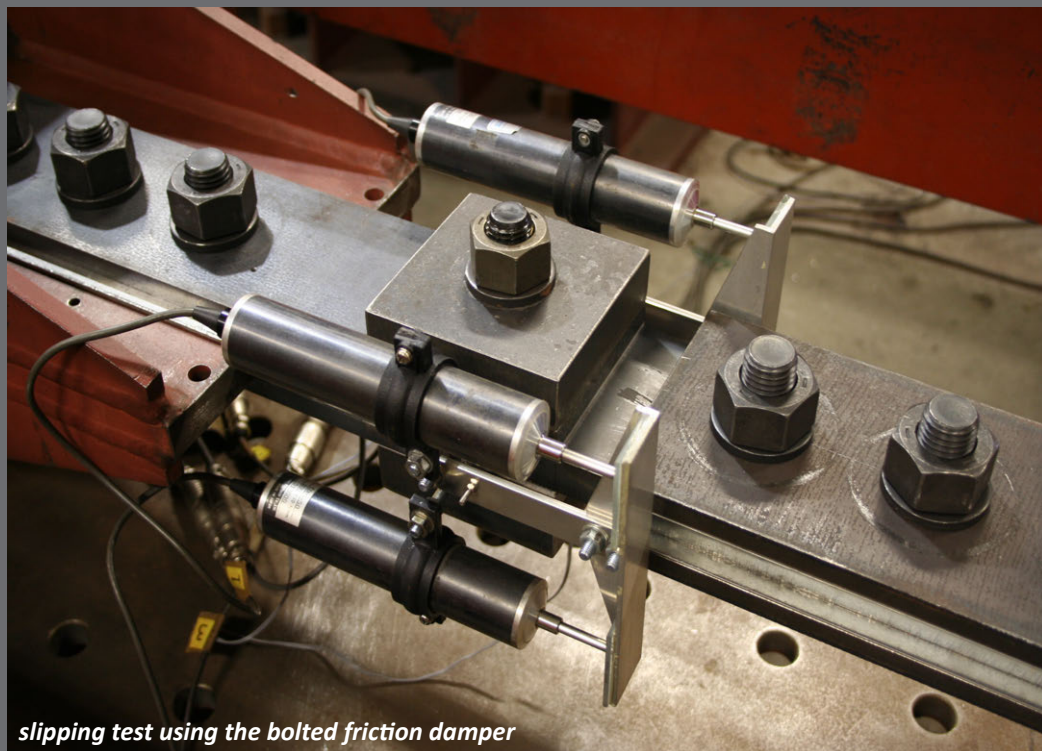
Associate Professor Tomokazu YOSHIOKA

He is one of the staffs in the Environmental Design Department in the Faculty of Design and he specializes in Structural Engineering.

He is interested in the development of inexpensive, high-performance building technology to protect the building from disasters such as earthquakes and typhoons and establishment of its design method.

Associate Professor Yoshioka had done many types of research relating to friction damper used to resist seismic motion during an earthquake. He has done experiments with different factors and materials such as using high strength aluminium plates as sliding members, applying different aspects ratio for the vertical walls, hot dip galvanized washer, steel bolt of different tightening tension, different smoothness of friction wall surface, etc., to find out the behaviours of the walls and various parts of the friction dampers, the sliding coefficient, etc., in relation to the different horizontal load applied.

He was also involved in the static load testing on an existing school, a three-storey reinforced concrete building



slipping test using the bolted friction damper

retrofitted with Concrete-filled Steel Tubular (CFT) braces to investigate the strength, stiffness and deformation capacity. The yield and maximum strength were also investigated and

compared to the calculations based on the "Standard for Seismic Capacity Evaluation of Existing Reinforced Concrete Buildings" (JBDPA 1977).

Coming UP!

April 2019

- Released of Annual Report
Vol.02 2018 - 2019

June 2019

- Designing Resilience in Asia (DRIA) Research Programme. Kyushu University students will be taking part in this research programme for the first time. Competition submission date on 17 June 2019 and Workshop and Presentation at Tainan, Taiwan from 1 to 6 July 2019.

CONTACT
CONNECT
COLLABORATE

Environmental Design Global Hub, Kyushu University



4-9-1 Shiobaru, Minamiku, Fukuoka, 815-8540, JAPAN



eghub@design.kyushu-u.ac.jp



<https://www.eghub.design.kyushu-u.ac.jp>



<https://www.facebook.com/eghub.ku/>